



22KW Adaptor Type2 To Tesla EV Charging Adapter Converter DC 500V

Our Product Introduction

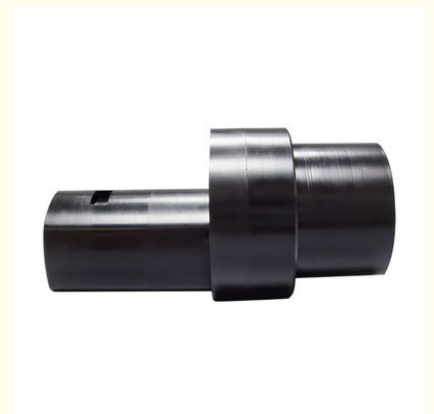
Basic Information

- Place of Origin: China
- Brand Name: MINKO
- Certification: CE
- Model Number: Type2 to Tesla DC Adapter(TYPE2-T)
- Minimum Order Quantity: 5 pieces
- Price: negotiation
- Packaging Details: L210xW85xH52 (mm)
- Delivery Time: 8 -10 working days
- Payment Terms: T/T, Western Union, MoneyGram, Paypal, Skrill, Transferwise
- Supply Ability: 1000000 pieces per month



Product Specification

- Housing: POM
- Rated Voltage: DC 500V
- Current: 200A
- Power: 22kW
- Plug Lifespan: >10000 Times
- Protection Class: IP55
- Highlight: 22kw Tesla Charging Adapter, 500vdc Tesla Charging Adapter, DC ccs to j1772 adapter



More Images



Product Description

22KW Adaptor Type2 to Tesla EV Charging Adapter Converter DC 500V

Detailed Description of Type2 to Tesla Charger Adapter

The Type 1 (J1772) to Type 2 (62196-2) adapter allows you to charge your Type 2 car (eg Tesla, Hyundai, Renault, Jaguar, Nissan) from any J1772 charging station. It's rated for 32A charging and has been tested in Australia using our own EVs.

Adapter for electric car to convert your charger from American standard to European standard.

Ideal for families with 2 EVs or plug-in hybrids with different connector types.

EV charger type 1 adapter for type 2 EV: This EV type 1 type 2 charging adapter is suitable for type 2 EVs charging, 16A-32A(max 32A), 1 pound makes it easy to carry.

Compact Type 1 to Type 2 EV charger converter,: Convert your EV charger Type 1 tethered cable plug to a Type 2 EV charge plug. This Electric vehicle adaptor is Designed to charge your Type 2 electric car from Type 1 tethered cable plug.

Type 1 J1772 EV Adapter has Two Sides: one side is J1772 EV male plug which connected to type 1 female EV plug, another side is IEC 62196-2 plug(7pins) connected to your type 2 Electric car.

EV electric car charger adapter cable 16A-32A&EVS Compatible: Suitable for most type 2 electric vehicles from Audi, Porsche, Tesla(EU standard), VW and more.....

Note: this adapter is not compatible with some tesla model car and BMW. Please check wheather you r type 2 car meet IEC62196-2 standard before order.

Specification of Type2 to Tesla Charger Adapter

| European standard DC adapter | | | |
|------------------------------|--------------|---------------------|-----------------------------|
| Model | TYPE2-T | Certification | CE |
| Power | UP to 100Kwh | Housing | POM |
| Current | 200A | Pins | Copper,alloy, silver plated |
| Rated voltage | 500V DC | Plug lifespan | >10000 times |
| Protection class | IP55 | Working temperature | -30 ~+85 |
| Insulation resistance | 0.7mΩ Max | Warranty | 12 months |
| Product insertion force | 45<F<80N | | |



TYPE2 to TESLA



Tesla charging



Type2 Plug



300A-150A

TYPE2 to TESLA



Tesla charging



Type2 Plug



300A-150A



Gently connect it to a TYPE2 charger
until you hear a “click”



Charging cable safety:

The cable should be kept out of puddles but can be kept outside.

Please remember to use the rubber cover to keep moisture from the connector when not in use. The vehicle will not charge if it senses moisture.

Moisture is the most common issue experienced and will lead to corrosion of the pins, so keep dry.



MINKO (SZ) TECHNOLOGY CO., LIMITED



+8613539872669



yumiko@szminko.com



evstationcharger.com

309 West Lake Industrial Zone, Cuishan Road, Dongxiao Street, Luohu District, SZ